



Mahatma Gandhi Mission's

## College of Engineering and Technology

(Affiliated to University of Mumbai and Approved by, AICTE, New Delhi.)  
Plot No. 1, 2, Sion - Panvel Expressway, Sector 18, Kamothe, Navi Mumbai, Maharashtra  
410209 Website : www.mgmmumbai.ac.in

DEPARTMENT OF ELECTRICAL ENGINEERING

### Student's Feedback Regarding Curriculum and Institution (Academic Year 2023-24)

Date: \_\_\_\_\_

Name: \_\_\_\_\_ Department: \_\_\_\_\_

Class: \_\_\_\_\_ Roll No. \_\_\_\_\_ Div.: \_\_\_\_\_

Please  Appropriate Box:

<i>Sr. No.</i>	<i>Assessment Factors</i>	<i>Excellent 5</i>	<i>Very Good 4</i>	<i>Good 3</i>	<i>Average 2</i>	<i>Poor 1</i>
1	"Teaching-Learning Process" in the Institute.					
2	Contents of the curriculum of your course.					
3	Availability of text books and reference books in the library of Institute.					
4	Classrooms, laboratories and workshop facilities available in the Institute.					
5	Training and Placement activities conducted by the Institute.					
6	Motivation and exposure to Co-curricular and Extra-curricular activities in the Institute.					
7	Information Communication Techniques (ICT) facilities provided by the Institute.					



Mahatma Gandhi Mission's

## College of Engineering and Technology

(Affiliated to University of Mumbai and Approved by, AICTE, New Delhi.)  
Plot No. 1, 2, Sion - Panvel Expressway, Sector 18, Kamothe, Navi Mumbai, Maharashtra  
410209 Website : [www.mgmmumbai.ac.in](http://www.mgmmumbai.ac.in)

### DEPARTMENT OF ELECTRICAL ENGINEERING

<i>Sr. No.</i>	<i>Assessment Factors</i>	<i>Excellent 5</i>	<i>Very Good 4</i>	<i>Good 3</i>	<i>Average 2</i>	<i>Poor 1</i>
8	Bus facilities provided by the Institute.					
9	Medical facilities available in the Institute.					
10	Internet, Wi-Fi facilities available in the Institute.					
11	Security & cleanliness in the Institute.					
12	Overall Rating of the Institute.					

#### Suggestions, if Any:

---

---

---

**Signature**

#### Evaluation Summary:

<b>Total Score / Index (Max. 60)</b>	
<b>Converted to Percentage (%)</b>	



Mahatma Gandhi Mission's

## College of Engineering and Technology

(Affiliated to University of Mumbai and Approved by, AICTE, New Delhi.)  
Plot No. 1, 2, Sion - Panvel Expressway, Sector 18, Kamothe, Navi Mumbai, Maharashtra  
410209 Website : [www.mgmmumbai.ac.in](http://www.mgmmumbai.ac.in)

DEPARTMENT OF ELECTRICAL ENGINEERING

### Student's Feedback Regarding Curriculum and Institution (Academic Year 2023-24)

#### Assessment Method

<b>Feedback Type</b>	<b>Description of the assessment process</b>	<b>Assessment Frequency</b>	<b>Assessed By</b>	<b>Received By</b>	<b>Analysis Method</b>
Student Survey	Feedback is sought from students about facilities provided by college in regards of various aspects.	Once in a semester (ODD)	Institute and Department	Institute and Department	To analyses positive responses i.e count of answer given by Students with rating of 3 & above on the scale of 5



Mahatma Gandhi Mission's

## College of Engineering and Technology

(Affiliated to University of Mumbai and Approved by, AICTE, New Delhi.)  
Plot No. 1, 2, Sion - Panvel Expressway, Sector 18, Kamothe, Navi Mumbai, Maharashtra  
410209 Website : [www.mgmmumbai.ac.in](http://www.mgmmumbai.ac.in)

### DEPARTMENT OF ELECTRICAL ENGINEERING

The following chart represents percentage of responses from students who have rated at 3 and above on a scale to the following questions.

Sr. No.	Assessment Factors	No. of Responses	No. of Positive Responses	Feedback Percentage
1	“Teaching-Learning Process” in the Institute.	745	692	92.88591
2	Contents of the curriculum of your course.	745	654	87.78523
3	Availability of text books and reference books in the library of Institute.	745	702	94.22819
4	Classrooms, laboratories and workshop facilities available in the Institute.	745	698	93.69128
5	Training and Placement activities conducted by the Institute.	745	690	92.61745
6	Motivation and exposure to Co-curricular and Extra-curricular activities in the Institute.	745	654	87.78523
7	Information Communication Techniques (ICT) facilities provided by the Institute.	745	645	86.57718
8	Bus facilities provided by the Institute.	745	705	94.63087
9	Medical facilities available in the Institute.	745	715	95.97315
10	Internet, Wi-Fi facilities available in the Institute.	745	607	81.47651
11	Security & cleanliness in the Institute.	745	711	95.43624
12	Overall Rating of the Institute.	745	710	95.30201



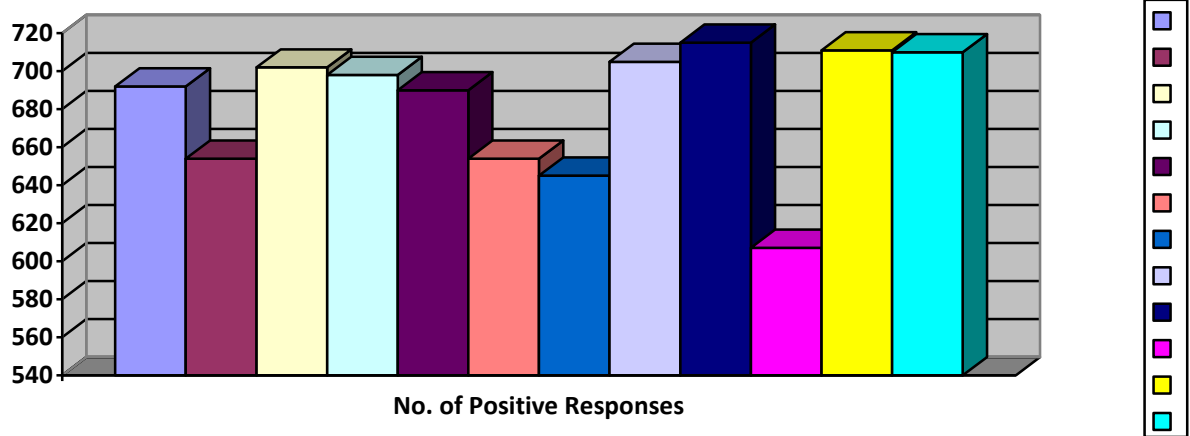
Mahatma Gandhi Mission's

## College of Engineering and Technology

(Affiliated to University of Mumbai and Approved by, AICTE, New Delhi.)  
Plot No. 1, 2, Sion - Panvel Expressway, Sector 18, Kamothe, Navi Mumbai, Maharashtra  
410209 Website : [www.mgmmumbai.ac.in](http://www.mgmmumbai.ac.in)

DEPARTMENT OF ELECTRICAL ENGINEERING

### Student's Feedback Regarding Curriculum 1





Mahatma Gandhi Mission's

## College of Engineering and Technology

(Affiliated to University of Mumbai and Approved by, AICTE, New Delhi.)  
Plot No. 1, 2, Sion - Panvel Expressway, Sector 18, Kamothe, Navi Mumbai, Maharashtra  
410209 Website : www.mgmmumbai.ac.in

DEPARTMENT OF ELECTRICAL ENGINEERING

### Teacher's Feedback Form (Academic Year 2023-24)

Date: \_\_\_\_\_

Name of the Teacher: \_\_\_\_\_

Designation: \_\_\_\_\_ Department: \_\_\_\_\_

Date of Joining: \_\_\_\_\_ Teacher's ID: \_\_\_\_\_

Please ✓ appropriate box.

Sr. No.	Assessment Factors	Strongly Agree	Agree	Satisfactory	Disagree	Strongly Disagree
1	The College Vision & Objectives are referred to and reflected in college decisions.					
2	Current syllabus & curriculum meets the industrial requirements.					
3	Program outcomes of the syllabi is well defined.					
4	Curriculum having good academic flexibility in teaching methodology, testing and continuous assessment.					
5	College provides opportunities for continuous development of Staff for upgrading the skill and qualification.					
6	The course content fulfils the upgrading the knowledge/need of students					
7	Computer facilities are made available for ICT based teaching to the teachers					
8	Laboratory requirements including equipment's, chemicals and specimens are regularly provided by the college.					
9	Does Curriculum enhances employability					
10	Need of continuous review of the syllabus					

Suggestions, if any: \_\_\_\_\_

Evaluation Summary:

Total Score / Index (Max. 50)	
Converted to Percentage (%)	



Mahatma Gandhi Mission's

## College of Engineering and Technology

(Affiliated to University of Mumbai and Approved by, AICTE, New Delhi.)  
Plot No. 1, 2, Sion - Panvel Expressway, Sector 18, Kamothe, Navi Mumbai, Maharashtra  
410209 Website : [www.mgmmumbai.ac.in](http://www.mgmmumbai.ac.in)

DEPARTMENT OF ELECTRICAL ENGINEERING

### Teacher's Feedback Form (Academic Year 2023-24)

#### Assessment Method

Feedback Type	Description of the assessment process	Assessment Frequency	Assessed By	Received By	Analysis Method
Teacher Survey	Feedback is sought from Teacher about facilities provided by college in regards of various aspects.	Once in a Year	Institute and Department	Institute and Department	To analyses positive responses i.e count of answer given by Teacher with rating of 3 & above on the scale of 5



Mahatma Gandhi Mission's

## College of Engineering and Technology

(Affiliated to University of Mumbai and Approved by, AICTE, New Delhi.)  
Plot No. 1, 2, Sion - Panvel Expressway, Sector 18, Kamothe, Navi Mumbai, Maharashtra  
410209 Website : [www.mgmmumbai.ac.in](http://www.mgmmumbai.ac.in)

### DEPARTMENT OF ELECTRICAL ENGINEERING

The following chart represents percentage of responses from students who have rated at 3 and above on a scale to the following questions.

Sr. No.	Assessment Factors	No. of Responses	No. of Positive Responses	Feedback Percentage
1	The College Vision & Objectives are referred to and reflected in college decisions.	73	66	90.41096
2	Current syllabus & curriculum meets the industrial requirements.	73	69	94.52055
3	Program outcomes of the syllabi is well defined.	73	68	93.15068
4	Curriculum having good academic flexibility in teaching methodology, testing and continuous assessment.	73	71	97.26027
5	College provides opportunities for continuous development of Staff for upgrading the skill and qualification.	73	69	94.52055
6	The course content fulfils the upgrading the knowledge/need of students	73	69	94.52055
7	Computer facilities are made available for ICT based teaching to the teachers	73	67	91.78082
8	Laboratory requirements including equipment's, chemicals and specimens are regularly provided by the college.	73	59	80.82192
9	Does Curriculum enhances employability	73	67	91.78082
10	Need of continuous review of the syllabus	73	69	94.52055
11	Overall Rating of the Institute.	73	67	91.78082





Mahatma Gandhi Mission's

## College of Engineering and Technology

(Affiliated to University of Mumbai and Approved by, AICTE, New Delhi.)  
Plot No. 1, 2, Sion - Panvel Expressway, Sector 18, Kamothe, Navi Mumbai, Maharashtra  
410209 Website : www.mgmmumbai.ac.in

DEPARTMENT OF ELECTRICAL ENGINEERING

### Parent/Guardian Feedback Form (Academic Year 2023-24)

Date: \_\_\_\_\_

Name: \_\_\_\_\_

Correspondence Address: \_\_\_\_\_

Contact Number: \_\_\_\_\_ E-mail Id.: \_\_\_\_\_

Name of Ward: \_\_\_\_\_  
\_\_\_\_\_

Year/Branch: \_\_\_\_\_ Sem. /Div.: \_\_\_\_\_

1. Are you satisfied with the infrastructure facilities of the Institute? : Yes / No
2. Are you satisfied with the discipline of the Institute? : Yes / No
3. Are you satisfied with the quality of teaching offered by the Institute: Yes / No
4. Are you satisfied with the Extra and Co-curricular activities conducted by the Institute? : Yes / No
5. Does the Institute regularly inform you about performance of your ward? : Yes / No
6. Do you feel your ward has been given the support he/she needs to succeed? : Yes / No
7. Do you feel that the curriculum of your ward meets the industry requirements? : Yes / No
8. Are you satisfied with common facilities provided by the institute? : Yes / No
9. Are you satisfied with the library facility provided by the institute? : Yes / No
10. Do you think that the requisite information is available on college web site? : Yes / No

Suggestions if

Any: \_\_\_\_\_

Signature

Evaluation Summary:

Total Score / Index (Max. 10)	
Converted to Percentage (%)	



Mahatma Gandhi Mission's

## College of Engineering and Technology

(Affiliated to University of Mumbai and Approved by, AICTE, New Delhi.)  
Plot No. 1, 2, Sion - Panvel Expressway, Sector 18, Kamothe, Navi Mumbai, Maharashtra  
410209 Website : [www.mgmmumbai.ac.in](http://www.mgmmumbai.ac.in)

DEPARTMENT OF ELECTRICAL ENGINEERING

### Assessment Method

<b>Feedback Type</b>	<b>Description of the assessment process</b>	<b>Assessment Frequency</b>	<b>Assessed By</b>	<b>Received By</b>	<b>Analysis Method</b>
Parents Feedback	Feedback is sought from the parents through parents meet, during their visits to the Campus	Once in a Year	Institute and Department	Institute and Department	To analyze positive responses i.e count of answers given by parents with rating YES



Mahatma Gandhi Mission's

## College of Engineering and Technology

(Affiliated to University of Mumbai and Approved by, AICTE, New Delhi.)  
Plot No. 1, 2, Sion - Panvel Expressway, Sector 18, Kamothe, Navi Mumbai, Maharashtra  
410209 Website : [www.mgmmumbai.ac.in](http://www.mgmmumbai.ac.in)

### DEPARTMENT OF ELECTRICAL ENGINEERING

The following chart represents percentage of responses from parents who have given answer YES to the following questions.

Sr. No.	Assessment Factors	No. of Responses	No. of Positive Responses	Feedback Percentage
1	Are you satisfied with the infrastructure facilities of the Institute?	154	120	77.92208
2	Are you satisfied with the discipline of the Institute?	154	122	79.22078
3	Are you satisfied with the quality of teaching offered by the Institute?	154	115	74.67532
4	Are you satisfied with the Extra and Co-curricular activities conducted by the Institute?	154	126	81.81818
5	Does the Institute regularly inform you about performance of your ward?	154	116	75.32468
6	Do you feel your ward has been given the support he/she needs to succeed?	154	120	77.92208
7	Do you feel that the curriculum of your ward meets the industry requirements?	154	122	79.22078
8	Are you satisfied with common facilities provided by the institute?	154	112	72.72727
9	Are you satisfied with the library facility provided by the institute?	154	114	74.02597
10	Do you think that the requisite information is available on college web site?	154	115	74.67532



Mahatma Gandhi Mission's

## College of Engineering and Technology

(Affiliated to University of Mumbai and Approved by, AICTE, New Delhi.)  
Plot No. 1, 2, Sion - Panvel Expressway, Sector 18, Kamothe, Navi Mumbai, Maharashtra  
410209 Website : [www.mgmmumbai.ac.in](http://www.mgmmumbai.ac.in)

DEPARTMENT OF ELECTRICAL ENGINEERING

### Academic Year 2023-2024

### Feedback Action Taken Report

Sr. No	Stakeholder	Suggestion Given/Issue	Action Taken
1	Student	Transportation facility frequency should be enhanced.	The time table of classes has been rescheduled in the current semester.
2		Photo copy (Xerox) center facility should be provided in library.	Photo copy (Xerox) center facility is made available at the entrance of the gate.
3		E-journals, new reference material and Videos Lectures should be provided.	New subscriptions are ordered and the work is in progress.
4		College website need to be updated.	Upgraded with necessary changes.
5		Cleanliness in campus should be maintained.	Instructions passed to house – keeping In-charge and monitored frequently.
6		Repairing of Sanitary Napkin Vending Machine need to be done.	Sanitary Napkin Vending Machine issue is resolved.
7		Video lectures/Advanced communication techniques should be implemented properly.	Department wise one classroom is equipped with smart boards, projectors and related training is given to all faculties.
8	Student/Faculty	Maintenance and cleanliness of washrooms must be done regularly.	Instructions passed to house-keeping team and work is monitored by house-keeping In-charge.
9	Faculty	Separate seating arrangement for Staff should be made available in Reading Section of Library.	Renovation of Library has been done and providing separate space for faculty in Library decision is going on.
10		Financial support for publishing papers and	Issue is raised in the management meeting, the



Mahatma Gandhi Mission's

## College of Engineering and Technology

(Affiliated to University of Mumbai and Approved by, AICTE, New Delhi.)  
Plot No. 1, 2, Sion - Panvel Expressway, Sector 18, Kamothe, Navi Mumbai, Maharashtra  
410209 Website : [www.mgmmumbai.ac.in](http://www.mgmmumbai.ac.in)

### DEPARTMENT OF ELECTRICAL ENGINEERING

		attending conferences should be given.	suggestion is accepted.
<b>11</b>	Employer	Aptitude skills of students must be taken care.	Soft skill and aptitude training programs are arranged for third year and final year students.
<b>12</b>		Extra efforts should be made for Communication skills of students.	Communication skill trainings are imparted to final year students.
<b>13</b>		Students must be aware of latest technologies in industry.	Appointment of Adjunct faculty from industry is suggested to management.
<b>14</b>	Parent	Bus frequency must be increased from station to college.	Frequency of to and fro buses has been increased.
<b>15</b>		Performance of ward must be communicated properly.	Practice of sending messages through CASERP is adopted.
<b>16</b>		Facility to pay fees into installments should be provided.	Facility was already provided to the applicants depending on the situation.
<b>17</b>	Alumni	More placement drives need to be arranged in the campus on regular basis.	Training and placement officer has instructed to take more efforts in this regard.